

# TANGRAM HOTEL & HOUSE

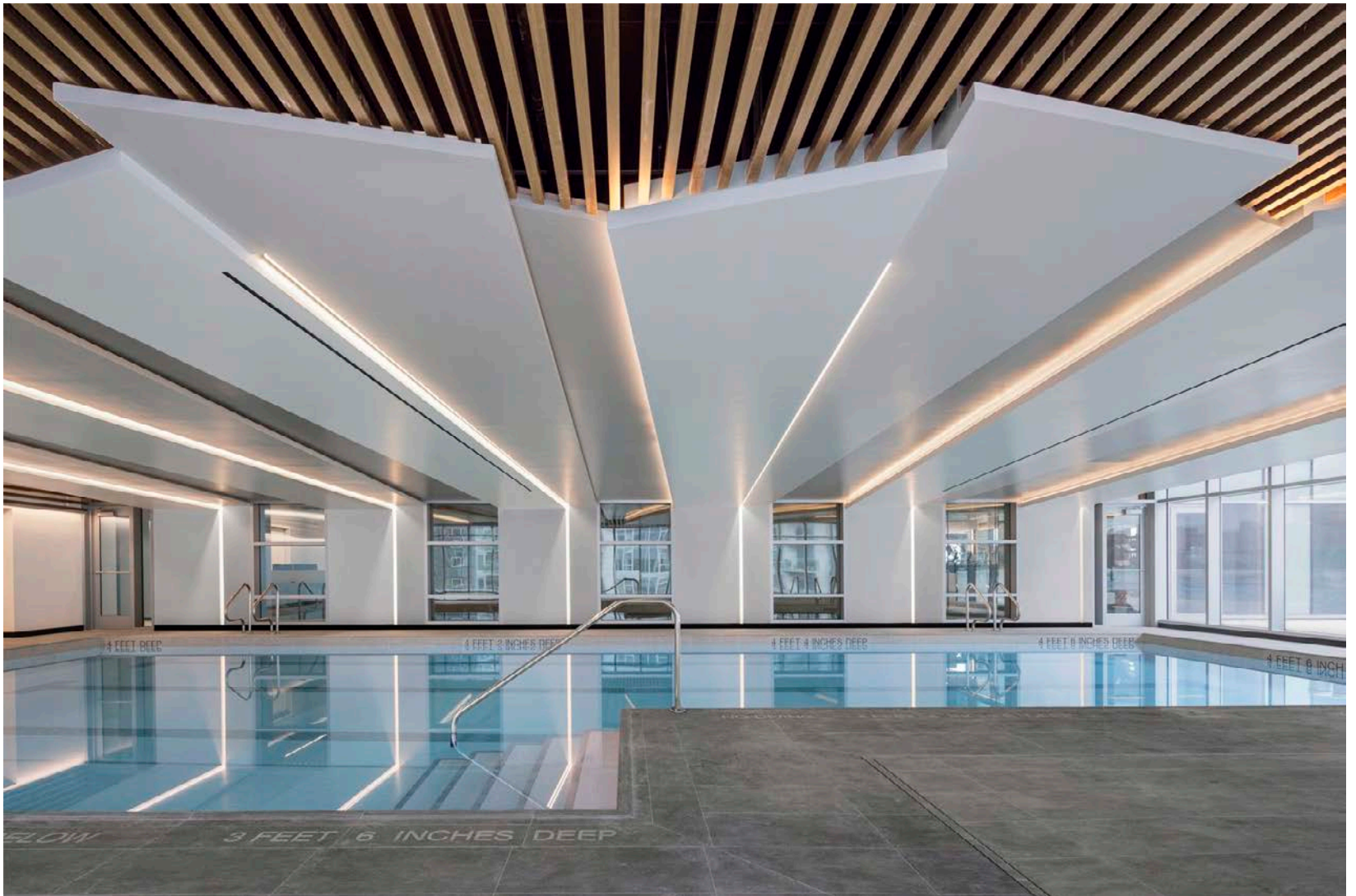
Queens, NY

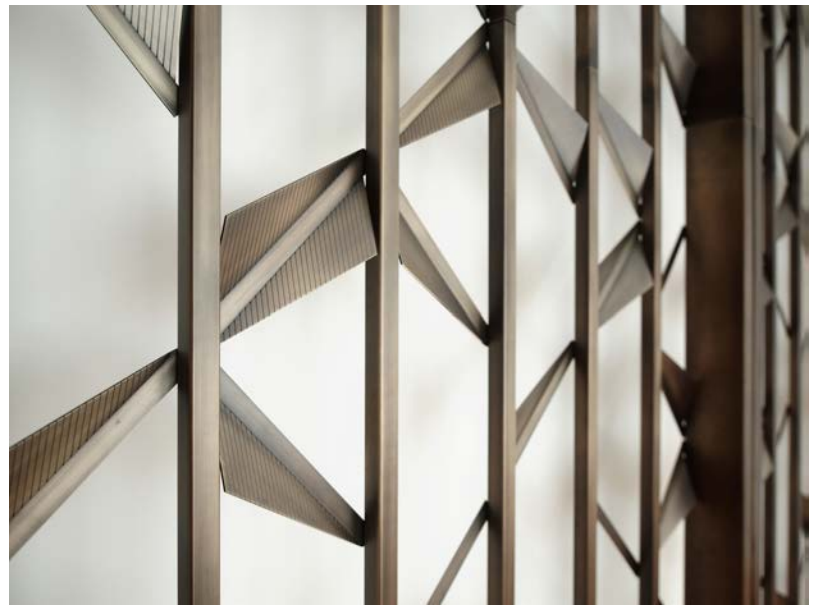
Role: Project Designer & Project manager

Lead team of three on the design and documentation of interior architecture for amenity space; Interior design for all residential units.

Oversees custom manufacturing coordination, project schedule and consultant communication. Manage FF&E package, commission local artist for the project.

- AIA Long Island: Archi Award
- NYCxDesign Awards
- BLT Design Awards
- 2023 Best of Year Awards finalist in the Fitness Center category





Ran Tian work samples @ JG Neukomm Architecture



# THE SUFFOLK

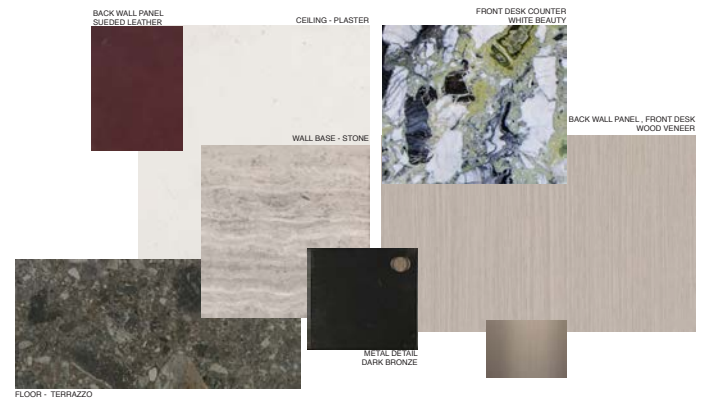
Lower East Side, NY

Role: Project Designer & Project manager

Lead team of five on the design and documentation of interior architecture for amenity space; Interior design for all residential units.

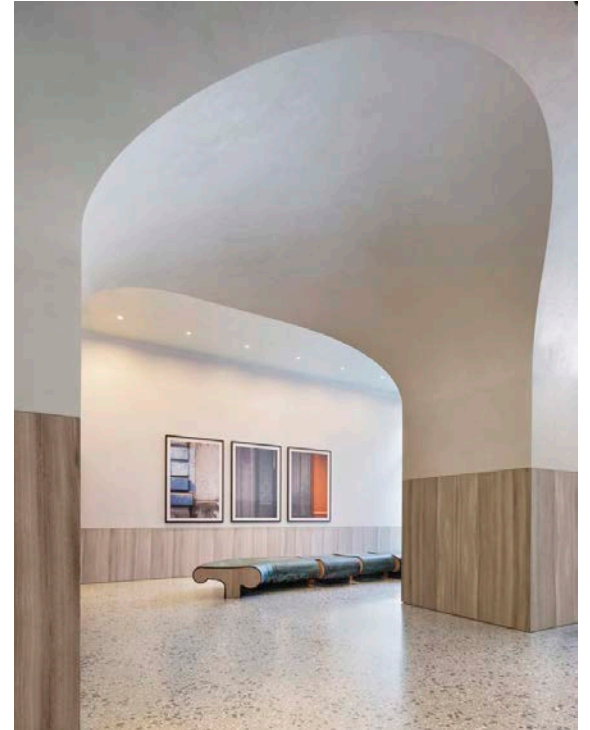
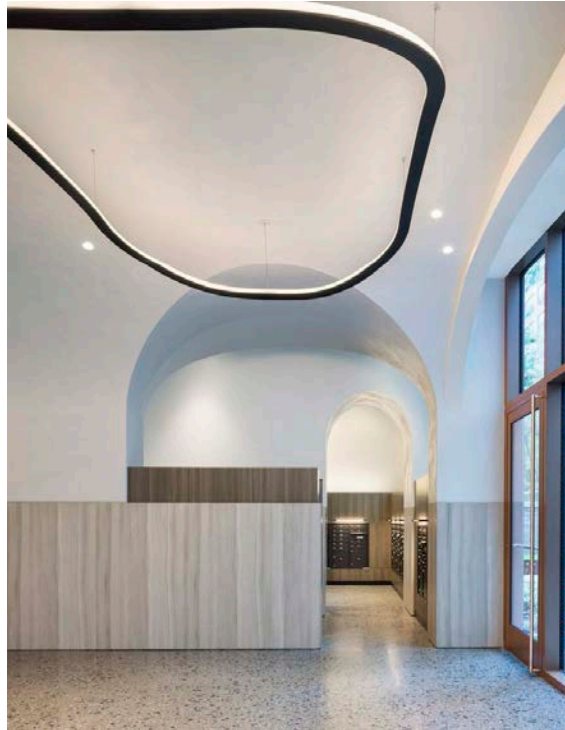
Oversees custom manufacturing coordination, project schedule and consultant communication. Work with property owner on developing art program for the project.

- Project featured in INTERIOR DESIGN magazine;
- 2023 Best of Year Awards finalist in the residential lobby + amenity space category.



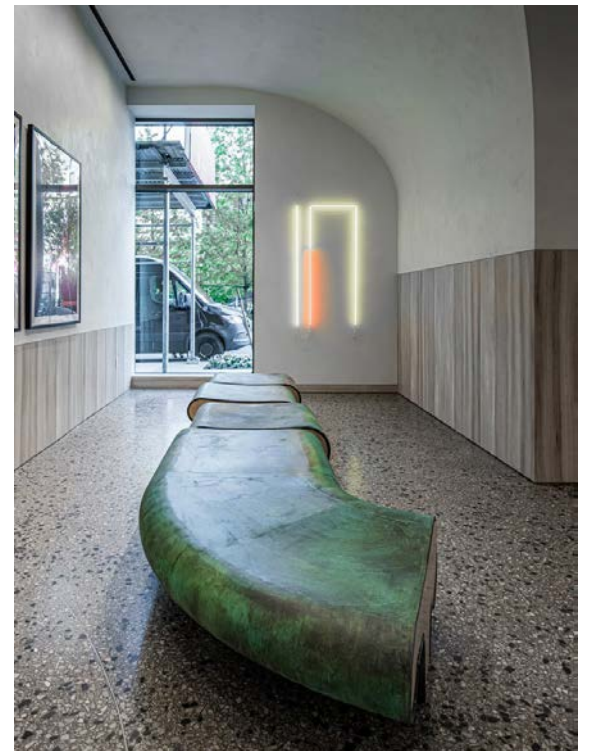
↑ Lobby - Materials  
↓ Photo



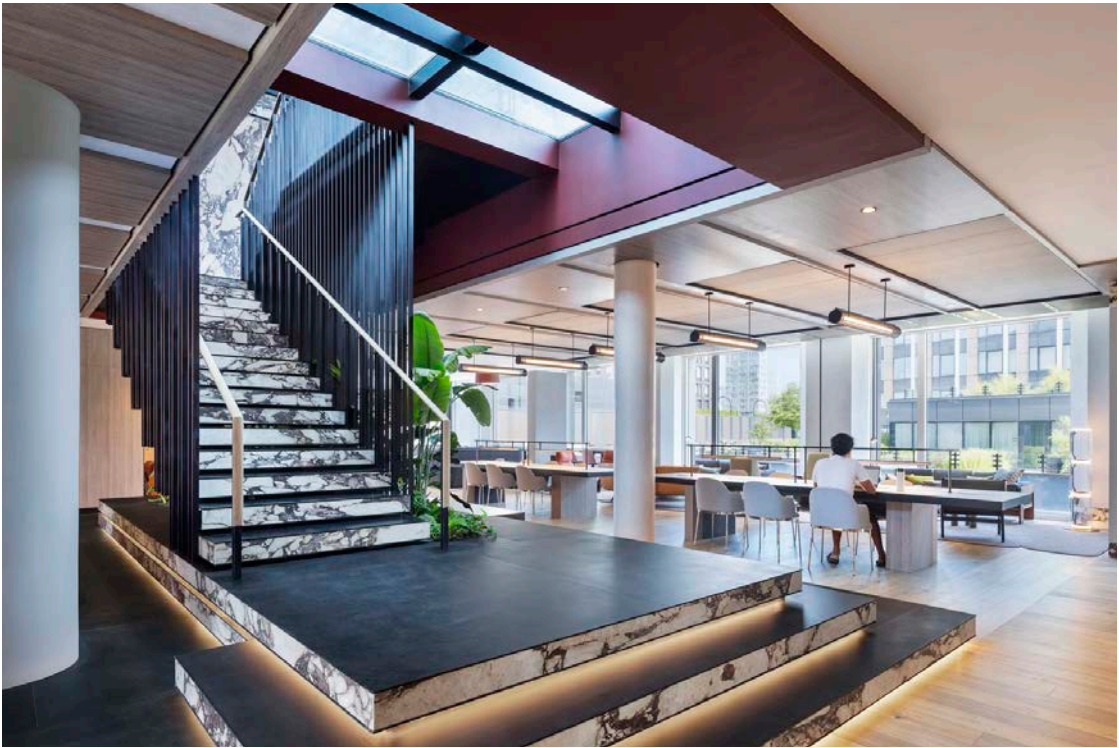


↑ Mail Room Photo  
↓ Model Study

↑ Lobby Seating Photo  
↓ Lobby Seating Photo



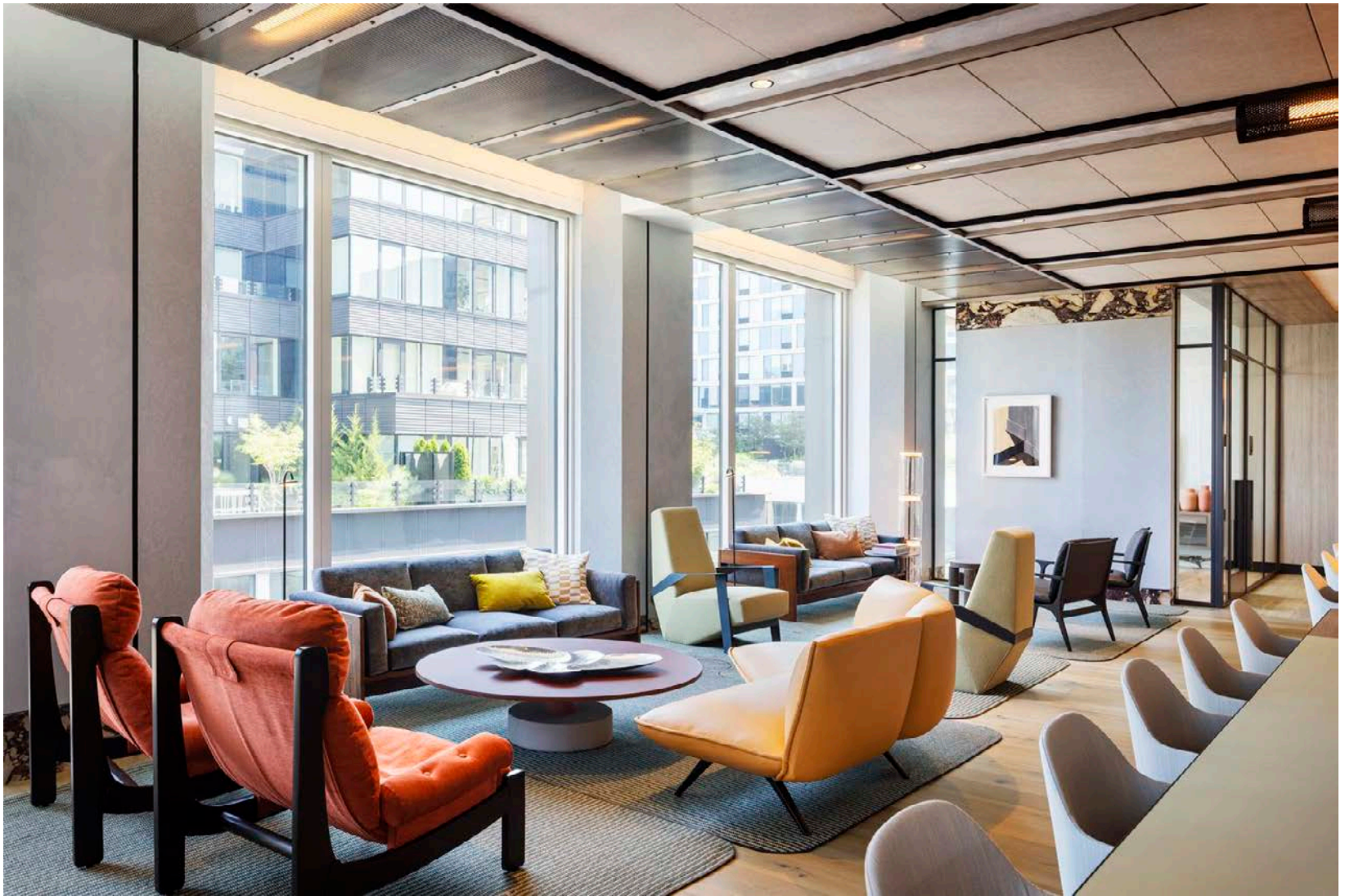




<- Amenity Stairs, Photo  
↓ Rendered Section







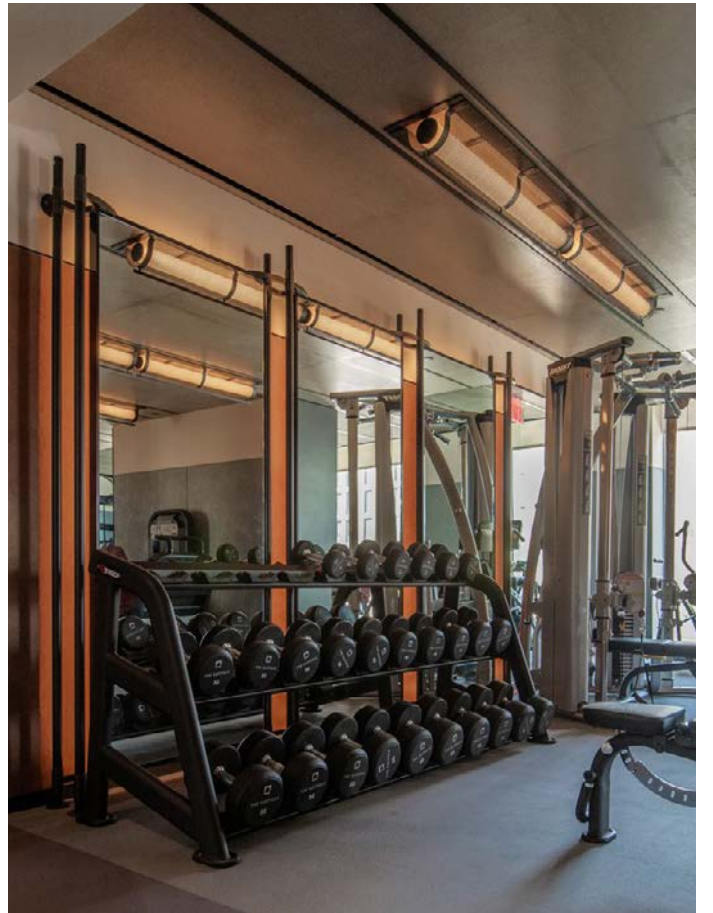
Amenity Lounge Photo



Partition, Rendering



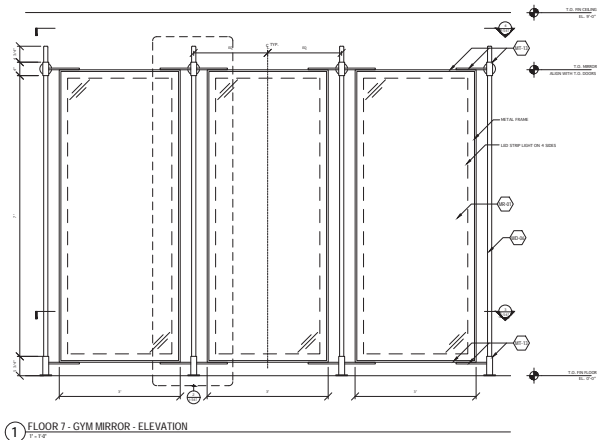
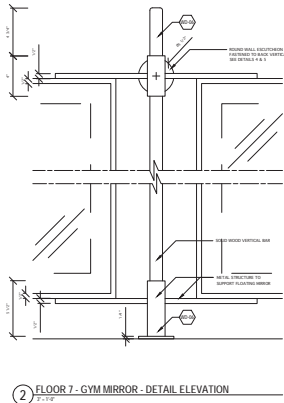
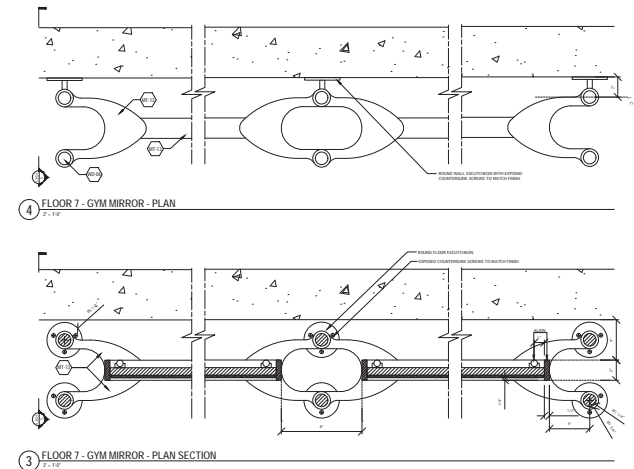
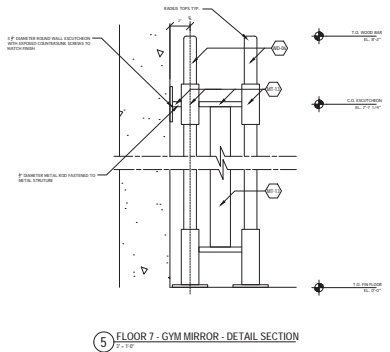
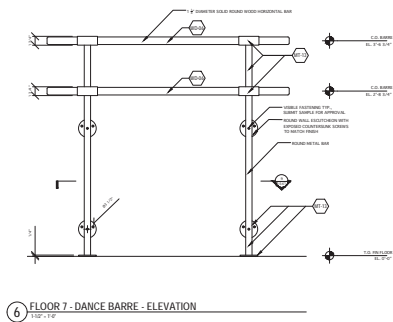
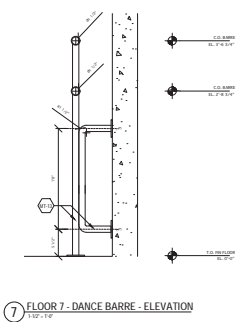
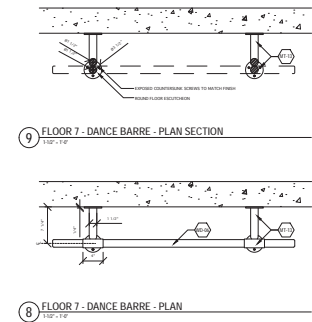
Inspo Images







<- Gym Custom Pieces,  
Rendering  
↓ Construction Drawings



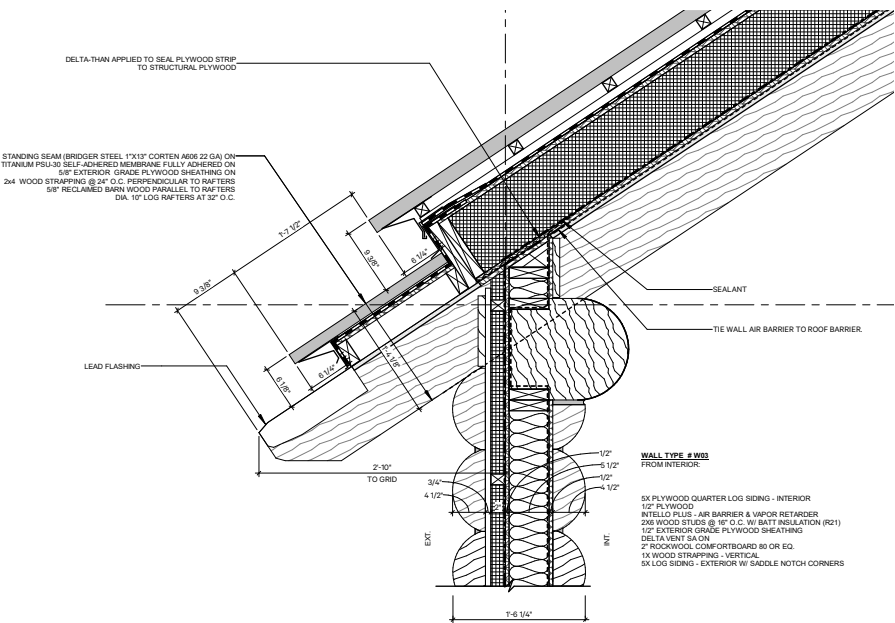


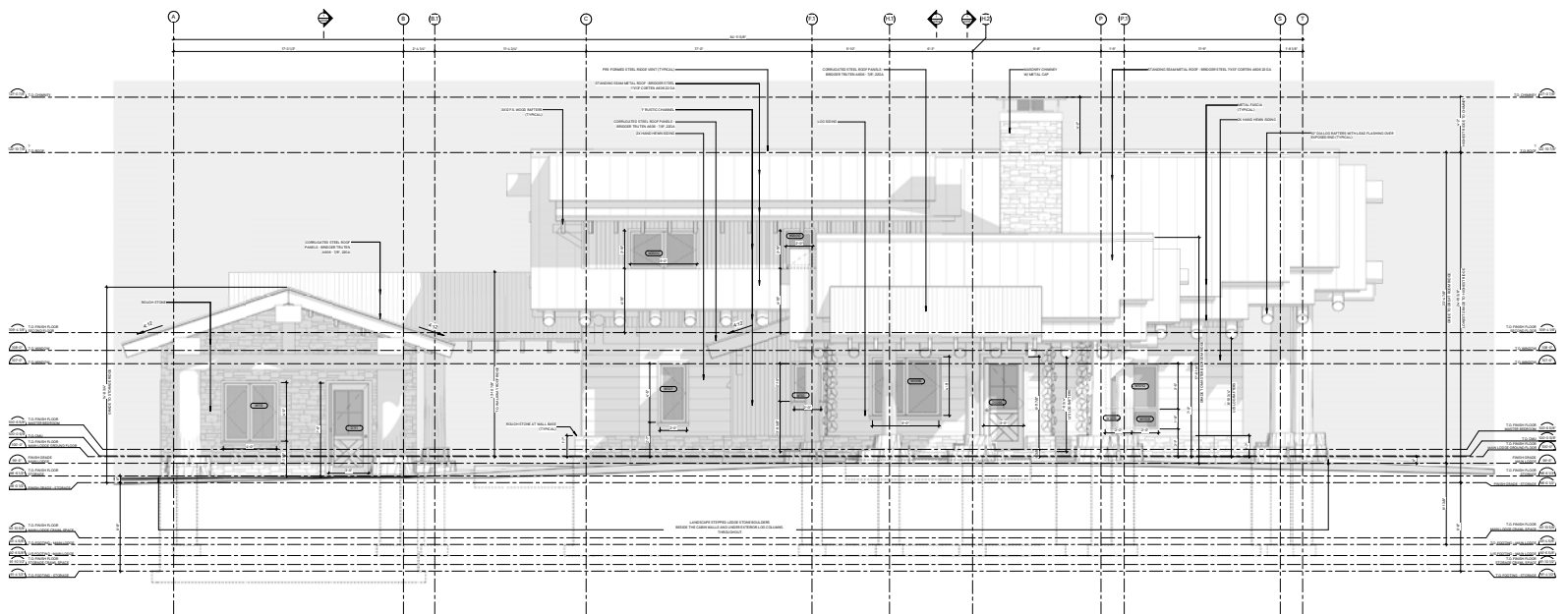
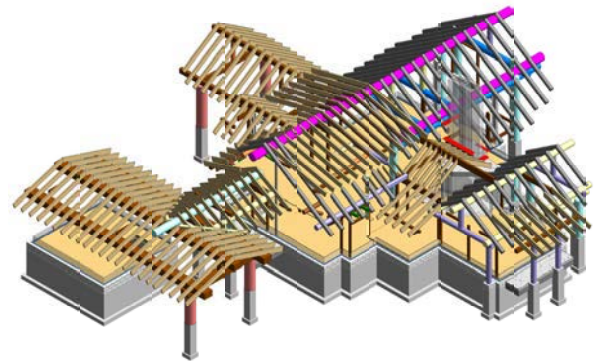
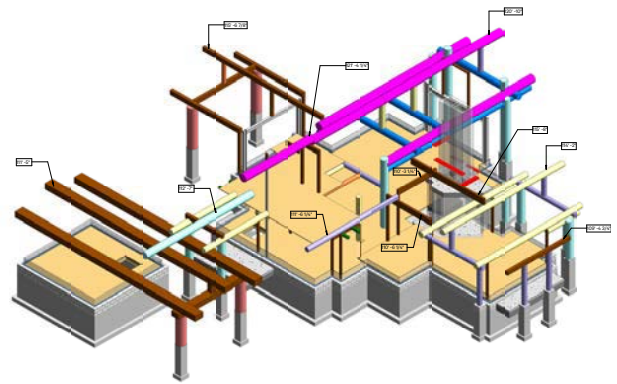
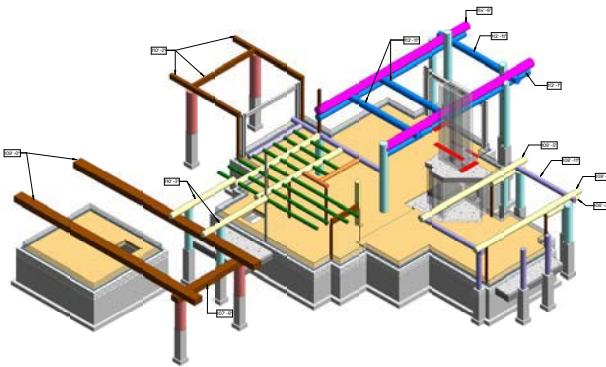
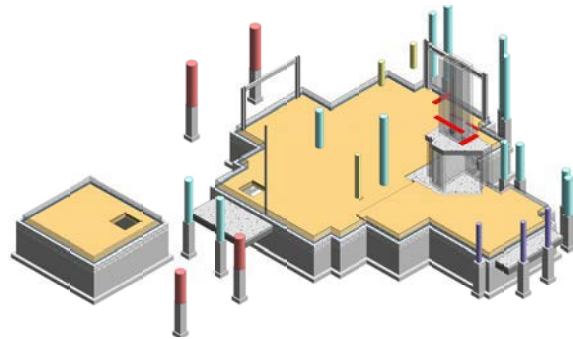
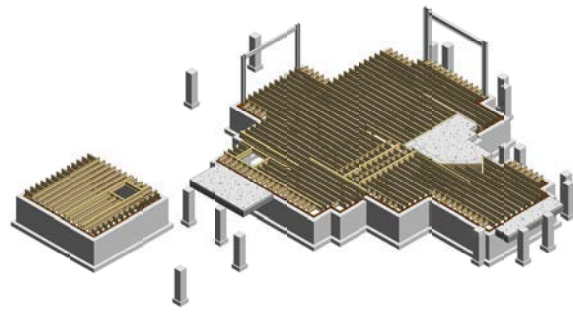
# DOUBLE ARROW CAMP

Seeley Lake, MT

Role: Intern Architect (OAA)

Complete construction drawing, develop site instructions for GC on lumber connection.







# HIGHLAND AVE

North Rosedale, Toronto

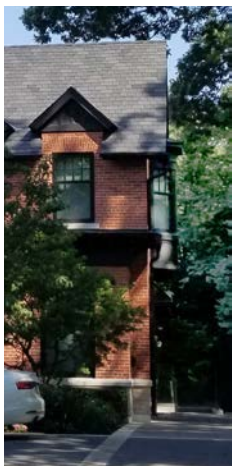
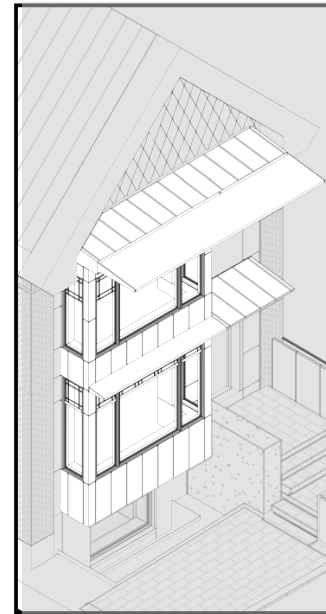
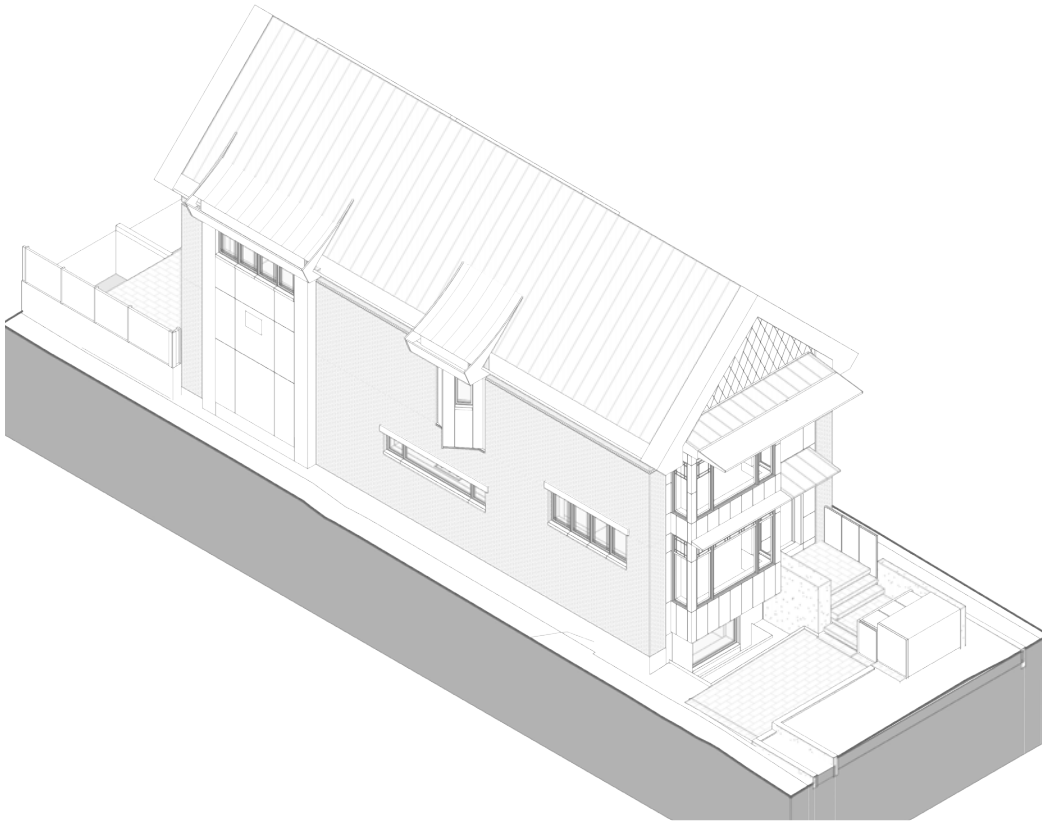
Role: Intern Architect (OAA)

Prepare documentations for zoning, and heritage review;

Conduct study of North Rosedale neighbourhood and prepare materials for NRRA meeting;

Complete programming and schematic design and documentations.

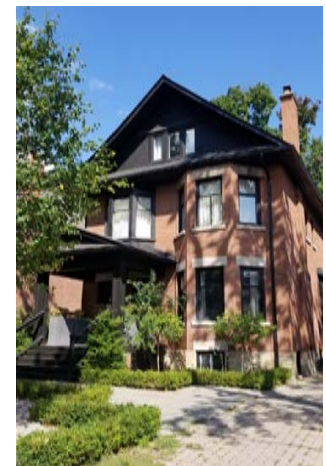
Develop building form to fit in with neighborhood context and achieve green building objectives with high-performance building assemblies.



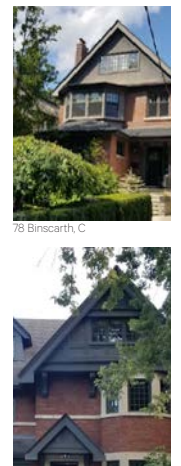
117 Glen, C



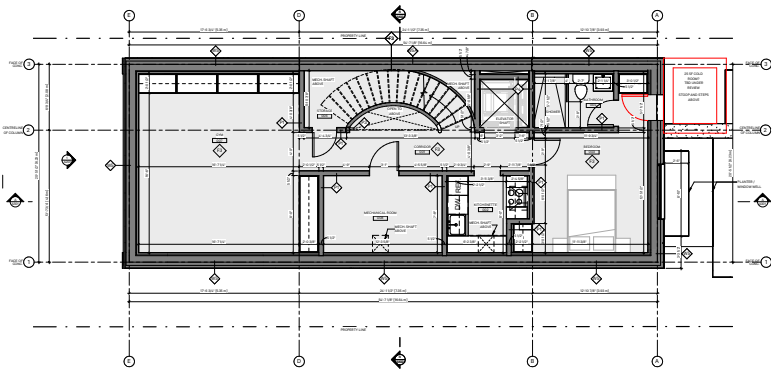
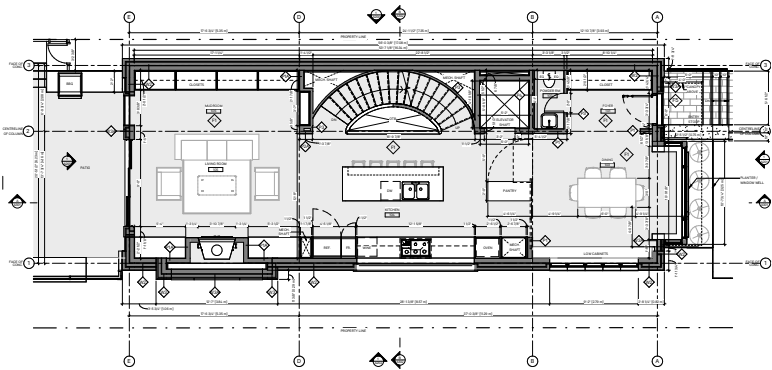
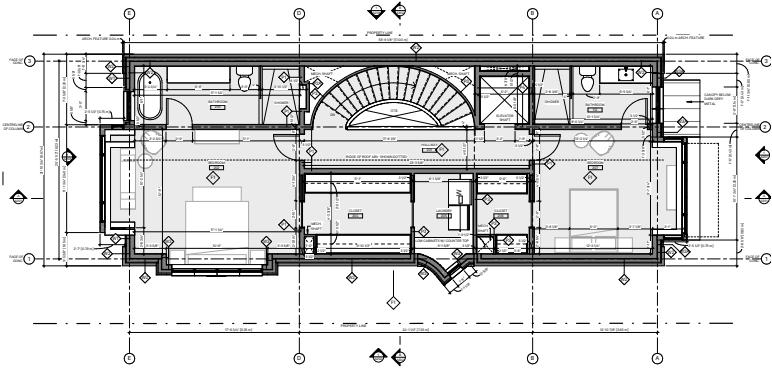
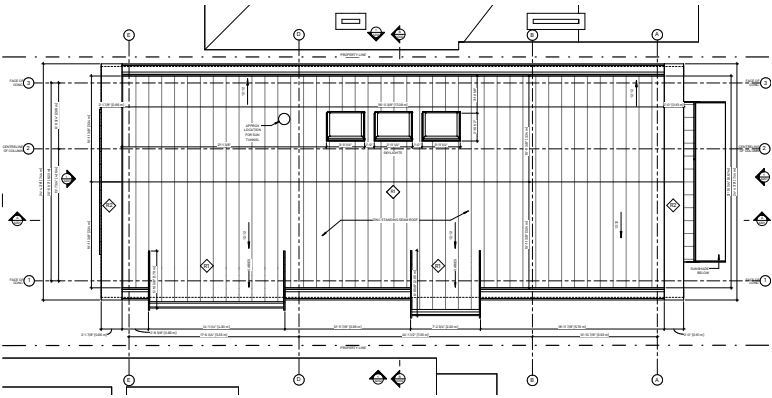
50 Binscarth, C



31 MacLennan Ave, C



25 Whitney, C



<- NRRA Meeting Presentation on  
Heritage Character.  
↓ Rendering

